



Springwood
Neighbourhood
Centre
Co-operative Ltd

Annual Report

2019-2020



**Springwood
Neighbourhood
Centre
Co-operative Ltd**

Ground Floor,
Blue Mountains Theatre and Community Hub
104-108 Macquarie Road, Springwood NSW 2777
PO Box 220 Springwood NSW 2777

Phone +61 2 47513033
Email: reception@sncc.org.au

facebook.com/SpringwoodNeighbourhoodCentre
www.sncc.org.au

ABN 46 383 912 486

Content and Editing
Lesley Lewis @ SNCC
Toni Quigley @ SNCC

Graphic Design
Louise Summerton
LX9 Design
louise@Lx9Design.com



Contents

CEO's Welcome Letter	2
Acknowledgement of Country	3
Chairperson's Message	4
Mission, Vision and Service Structure	5
Organisational Chart	6
Special Thanks, Our Partners	7

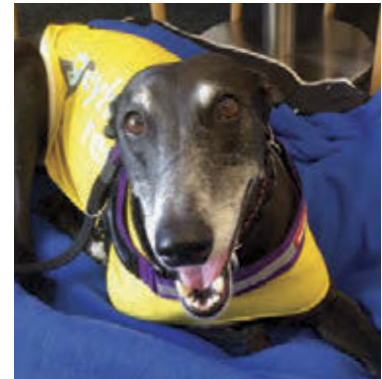
Children, Families and Community	8
Reflections by our Community & Cultural Development Worker	9
Greyhound rescue	10
Raising Kin group and Grandparents & Elders Day event	11
HubCon comes to Springwood	12
NAIDOC 2019	13
Manners Park Tree traditional event	14
Mothers and Daughters cultural workshop	16
Maths Club	16
Emergency Food Support	17
Blue Fringe Arts Festival	18
Mental Health First Aid	19
Are You Inclusive?	19
International Women's Day event	20
Wednesday afternoons in the Centre	21
Women With Words	21
Gateway Family Services partnership	21
Resilience and Preparedness – Get Ready events	22
Tax Help	22
Thank you to our Emergency Services	23
Groups and Activities	24

Tanderra OOSH Service	26
------------------------------	-----------

Aged Care	32
Dementia Carers' Support group	33
Volunteer Home Visitors service	34
Community Visitors Scheme service	35
Be Connected service	36
Talking Gazette	36

Volunteers	37
-------------------	-----------

Financials	41
-------------------	-----------



From the **CEO** ...

I would like to acknowledge the Darug and Gundungurra people and pay tribute to their elders past and present and those emerging and thank them for their custodianship of the land that we share.

When I reflect on the last twelve months I cannot help but feel that the future direction of the Springwood Neighbourhood Centre Co-operative Ltd as noted last year to be “dynamic, responsive and ever evolving to the needs of the community” has certainly come to the fore.

We have all been facing challenging and uncertain times however I can say with confidence that everyone involved with SNCC has met that challenge and worked to support our community and each other in whatever way we can. Times of uncertainty test everyone and we are not in this alone.

When I review our service provision since July 2019 I am reminded of how much we have achieved.

The demand for our Aged Care Services - Community Visitors Scheme, Volunteer Home Visitors and our Social Support Groups has grown and even though we have an amazing group of volunteers for these services we are unable to meet all of those needs. The various restraints that have been placed on the provision of services since early March 2020 have meant that the face to face meetings of clients with their volunteers have also been restricted and this has exacerbated various issues for members of this community. The isolation and loneliness that one can face as we age has also been highlighted and so our creativity has been called upon to support our clients and new ways of engaging have become paramount. Fortunately our volunteers and the VHV co-ordinator have stayed in contact with our clients through extensive phone calls – visiting and having conversations across driveways – through open doors and also using other forms of digital technology to communicate. Ensuring that our clients know that they can contact us at any time has been a priority and through this contact we have been able to ensure that support via food hampers has also continued. Further in this Annual Report you will read more about our Community Visitors Scheme and Volunteer Home Visitors Scheme and some of our special initiatives.



In January 2020 the responsibility for the provision of services through Community Visitors Scheme was moved from Springwood Neighbourhood Centre Co-operative to Belong Blue Mountains. This decision was taken to ensure that members of the community would continue to receive the most appropriate service possible and to ensure that the level of funding was not reduced to such an extent that it would make this level of service provision impossible. I would like to acknowledge the co-coordinator of this service, Jo Newton, for her commitment to her clients and volunteers and also to the management of Belong Blue Mountains for their support of this service, its clients and volunteers.

It seems as though this last year has been one of great challenges and change both personally and professionally. We all remember the bushfire season here in the Blue Mountains and for the first time in many years we had to prepare ourselves for the uncertainty of what that might bring. Through the amazing work of our volunteer Rural Fire Service, the SES and other emergency services and many other volunteers we were saved from having to deal with complete devastation. We are very thankful for their dedication and also for the many people who have assisted our community in the ongoing recovery.

Then in March we were hit with COVID 19 – this unknown virus has challenged us in all sorts of ways both professionally and privately and has meant that many of us are now working in a completely different way. We now have set up various forms of home offices and our usual interaction with our colleagues and members of the

We have all been facing challenging and uncertain times however I can say with confidence that everyone involved with SNCC has met that challenge and worked to support our community and each other in whatever way we can



Acknowledgement of Country

community has changed quite markedly. The Springwood Neighbourhood Centre has continued to provide support for its community by supporting those in need with emergency food hampers and so we have continued to provide a reduced service to accommodate this. Many members of our community have been challenged in ways that we did not think possible. Our Centre closed from March till early June and has re-opened for limited service and the opportunity to re-engage in a limited fashion. The challenges with the continuation of many of our activities has taken its toll on many members of the community and through some easing of the restrictions we are now able to offer activities to our community.

One of our major areas of service delivery, community development, has been impacted by changing in funding requirements and also new reporting requirements. The Department of Communities and Justice (formerly Family & Community Services) is implementing the Targeted Early Intervention framework which has a very specific focus – primarily vulnerable families and children. This new framework also comes with a new reporting system that our staff have spent many hours becoming familiar with. These changes also highlight the extensive resources needed to meet all the compliance requirements of the funding. This has to be provided by the organisation.

If one can take a positive approach to all of this it means that the governance infrastructure that underpins the work of SNCC has been thoroughly reviewed and upgraded to be in line with all government requirements. A big thank you to all the staff and Board members who have participated in this process.

Throughout this time our many volunteers have continued to support the staff, the organisation and more importantly the community in many different ways. We are very lucky to have such dedicated people supporting us and a big thank you to them all. A special thank you to the volunteers who sit on the SNCC Board – thank you for your ongoing contribution and support for all that we do.

I would also like to thank all of those organisations with whom we partner. We would not be able to deliver the variety of services to so many people in the Blue Mountains without your support and expertise.

Finally I would like to thank the wonderful staff who show care and consideration for their community in all that they do and flexibility and creativity in the way in which they carry out their responsibilities at this time.

TONI QUIGLEY
CEO

Springwood Neighbourhood Centre Co-operative Ltd (SNCC) acknowledges that we work on the traditional lands of the Darug and Gundungurra peoples and pay respect to the strength, capacity and resilience of past and present Aboriginal people in this region.



From the **Chair ...**

What an amazing year this has been. First bushfires and smoke from late 2019, finally relieved by flooding rain in February 2020, then Covid-19 really put the cherry on the cake from March onwards.

Each of these events has imposed challenges and unexpected pressures on our community. The stresses associated with each became an ongoing general anxiety within the community from December to June and this has resulted in emotional and physical effects on all of us. It has been a time that truly exposed the benefits of having a wide ranging, flexible, community focused Neighbourhood Centre in our midst.

I am extremely proud of our organisation and how our volunteers, staff and CEO stepped up to ensure that whatever services and supports were possible to deliver were delivered. Many activities needed to be modified – some face to face activities went on-line, some contacts were by telephone, food parcels were delivered to the door and the needs of our most vulnerable community members always remained top of our agenda. Our staff and volunteer team responded with their usual energy and care so that services were generally maintained as well as possible under the trying circumstances of 2019-2020.

The need for first class technology was never more evident. Like many other organisations, SNCC needed to enable staff to work from home and to ensure this could be safely achieved. Home office space (often the family dining table), computer equipment and internet were required and as a Board we needed to ensure each staff member was provided with the tools they needed to continue to serve the community. I want to personally thank Lesley Lewis and Toni Quigley for the way they approached this technology challenge and indeed all SNCC staff for their willingness to take on these flexible working arrangements.

The Board also needed to embrace this change in our meeting procedures and we've all become experienced "Zoomers" over the last few months.



Governance challenges have included ensuring ongoing financial viability through the limitations of Covid-19, working our way through various Government support schemes and endeavouring to understand new State funding and reporting arrangements. As you will see from our financial reports, we managed that process well and we will continue to monitor and adapt as needed to maintain our current healthy financial position. Vital policy and procedure review was also achieved and all required legal reporting was successfully undertaken.

Being Chairperson of SNCC is a wonderfully rewarding position. I have appreciated the support and companionship of my fellow Board members and the guiding wisdom they bring to our meetings and discussions. I am grateful for the amazing staff and volunteers at SNCC – they are truly a passionate and dedicated team that well and truly punches above their weight on a daily basis.

I am positive about our future and I'm looking forward to continuing the SNCC journey with them into the new year.

JO RIDLEY
CHAIRPERSON

“I am extremely proud of our organisation and how our volunteers, staff and CEO stepped up to ensure that whatever services and supports were possible to deliver were delivered”

Our **Vision**

We strive for a community that is vibrant, caring and inclusive.



Our **Mission**

SNCC is a community managed organisation, linking people, resources and ideas. SNCC applies the principles of social justice to the wellbeing of the community.

Finance

Children & Families

Aged Care

SNCC
Service
Structure

Volunteers

Community
Building



Organisational Chart



Special thanks and acknowledgement to all SNCC funding bodies and supporters

Funding & Financial Support

Commonwealth Government,
Department of Health
NSW Government, Education &
Communities
NSW Government, Department
of Communities & Justice
(formerly FACS)
NSW Government, Premier &
Cabinet
Good Things Foundation

Federal and State Members of Parliament

Susan Templeman, MP (Federal
Member for Macquarie)
Trish Doyle, MP (Member for
Blue Mountains)

Blue Mountains City Council, Mayor Mark Greenhill and all BMCC Councillors

Supporters

Great Community Transport –
volunteer drivers
Springwood Community Health
Centre
Springwood Sports Club
Springwood Country Golf Club
Tim's Tidy-Up Service

**SNCC thanks all members
of the community** for their
generous donations and support
during the 2019-2020 financial
year, including the Springwood
Chamber of Commerce and all
Springwood village businesses.

Emergency Food Support

Anonymous financial donors
Bakehouse on Wentworth
Bakery Patisserie Schwarz
Blooms Chemist
SDA Church, Warrimoo
Springwood Lloyds IGA
Supermarket – provides weekly
dry goods through its generous
customers
Winmalee Neighbourhood
Centre

Key Weekly Contributors

Springwood Florist – provides
flowers for our Centre
Springwood Newsagency –
provides newspapers for our
Centre

Local Schools & Child Care Centres

Carinya Neighbourhood
Children's Centre Inc.
Ellison Public School
Faulconbridge Public School
Rainbow Preschool
Springwood High School
Springwood Public School
St Thomas Aquinas Primary
School
Winmalee High School
Winmalee Public School

**SNCC also thanks all the staff
at Blue Mountains Theatre &
Community Hub, Springwood**
with whom we share "The Hub".

**Lastly, SNCC extends its
thanks to all other community
organisations with whom
we work.**

Partner Organisations

Belong Blue Mountains
Neighbourhood Centres
Blackheath Area
Neighbourhood Centre
Blue Fringe Organising
Committee
Blue Mountains Food
Services
Blue Mountains Lithgow
Integrated Network
(BLINN)
Blue Mountains Women's
Health & Resource Centre
DARE Disability
Fire & Rescue NSW,
Springwood Fire Station
Gateway Family Services
Mental Health First Aid –
Jane Armstrong
Money Care – Salvation
Army
Mountains Outreach
Community Services
(MOCS)
Mountains Community
Resource Network
(MCRN)
Mountains Youth Services
Team (MYST)
Rural Fire Service
Stronger Families Alliance
Tax Help
Western Sydney
Community Forum
Western Sydney Institute
TAFE
Winmalee
Neighbourhood Centre

Children, families & community





Reflections by our Community & Cultural Development Worker

The 2019-2020 financial year has been one of great excitement and growth as well as immense challenge for the community and for the organisation. My role as Community Development Worker during this time has given me such joy working with the community to develop, enhance and support an environment that is vibrant and inclusive. Through the challenges there have been opportunities to reflect on what it means to maintain connection and hope during times of crisis.

The first half of this reporting period was a busy time bringing community together with events, groups, activities and connection. This part of the year was full of colour and creativity and active engagement with our community.

In November 2019 the Raising Kin Support Group held a Grandparents and Elders Day at the Valley Heights Rail Museum. The Museum rolled out one of their old Steam Trams for everyone to have a ride on and it was quite an experience to watch the Morse Coders relay information using the traditional equipment. The work this group does for their families and also the way they continue to embrace opportunities to find joy in life is an inspiration. They continue to meet every month at the Centre.

Other activities which we held are highlighted later in our Children, Families & Community section.

By October the fire season had come early to the mountains and with such ferocity that the whole of the summer was one of anxiety and concern. For many the not-too-distant memories of the 2013 fires brought up past trauma, a sense of preparedness, connecting with their neighbourhood and their community and distress at the impact of the fires on our environment and our animals. The Centre itself was a space where people could gather to become familiar with the Fires Near Me app, to engage with the groups and activities that were running.

The heavy rain that followed helped extinguish the last of the fires and gave community a respite from the anxiety. And then in March 2020 along came COVID-19. If the fires brought solidarity, COVID-19 was in danger of bringing disconnection and isolation. The opportunities to gather were reduced and restricted in order to ensure those most vulnerable in our community were best protected. As a Community Development Worker, I found this shift meant I had to rethink how to respond to the community when the usual ways were compromised. It also challenged me to continue to see hope and possibility both in my community work and in myself.

As an organisation we adjusted and adapted successfully to working from home and in the Centre, albeit in a reduced capacity. Our wonderful volunteers also adjusted and adapted to the new challenges COVID-19 brought. They created food hampers that were home delivered and some of the support and activity groups switched to online platforms to remain connected and engaged.

As staff we supported each other through 'Whats App' chats and Zoom meetings. We made sure we still had time for the non-work catch up conversations that help to keep us connected. In many ways I feel we lead by example in both demonstrating the importance of health and safety while also committing to remembering that each of us experience our own personal stresses and challenges. Their ongoing support and commitment during this time was exceptional.

Imelda Eames

Greyhound rescue

On Sunday, 28 July 2019, same day as monthly Growers Market, the Centre hosted the Greyhound Rescue group and dogs. This event highlighted the plight of greyhounds in need and proved to be one of our most attended Sunday openings with 216 people coming to talk with the group and the dogs in their care.



216
visitors





Raising Kin group & Grandparents and Elders Day event

Jenny Davies, who is the group facilitator for Raising Kin was successful in obtaining a grant to host a Grandparent and Elders Day. The event was held at the Valley Heights Rail Museum on Sunday, 3rd of November 2019. SNCC paid the cost for the museum to open free for the day. The Museum ran the steam tram free for families and people to ride on. A BBQ was also provided for a small cost.

On the day we had representatives and attendees from:

- Aboriginal Community Resource Centre (ACRC)
- Mountains Youth Services Team
- Radio Blue Mountains
- The Morsecodians (Morse code experts)

It was a terrific day with approximately 150 people in attendance. The ACRC engagement was particularly exciting with two Elders bringing wooden cut outs for children to paint and take home which was very much appreciated.



150
participants



ComiCon comes to Springwood

In July 2019, Blue Mountains Theatre & Community Hub in Springwood (“The Hub”) launched the inaugural HubCon - a celebration of all things pop culture. Based on the model of Comic Conventions (“ComicCon”) the HubCon brought pop culture to life in Springwood.

The Neighbourhood Centre was delighted to participate in this exciting initiative. While many of the HubCon events were ticketed, SNCC recognised the importance of ensuring those more disadvantaged in the community were also able to participate in this event.

We had free face painting, a Lego building extravaganza and free badge making for all in our community and over the two days 209 children and young people visited our Centre along with 230 adults.

The badge making gave children and their parents the opportunity to colour in pre-designed pictures or create their own design and then immortalised it on a badge. One father and his teenage daughter were there for a long time creating beautiful badges for other family members.

The father commented that his daughter had recently experienced a major mental health crisis that led her to being hospitalised. Her healing came through colouring in and the badge making was another chance for them to help maintain her mental health.



209
children
& young
people

230
adults





NAIDOC 2019

SNCC celebrated NAIDOC with a workshop held in our Centre facilitated by local Dharug man Chris Tobin. As an artist/educator Chris works in the Blue Mountains and much of Western Sydney sharing local Aboriginal heritage and culture. Chris spoke about cultural plants and life for Aboriginal people before colonisation. He brought with him examples of tools used by his ancestors and the children present were given an opportunity to hold the items to help deepen understanding and connection. Chris then took the families outside to paint the tree in the forecourt with ochre. While in the sun the children also delighted in painting their hands with the ochre to mark out the tree.



Manners Park Tree traditional event

In December 2019 sixty seven local primary school children once again descended on the Manners Park tree for the 42nd Christmas tree decorating event. As tradition dictates the Springwood Fire and Rescue crew were there to lend a hand and a ladder to help the children reach the branches of the big Deodar tree. As each class had their turn in hanging their home made decorations the rest of students sang Christmas carols to the delight of the family members who had come along to be part of this day. It is always a delight to hear the stories of the parents who themselves had hung their decoration when they were in primary school.

Thank you to the staff and students from St Thomas Aquinas School, Springwood Public School, Ellison Public School, and Winmalee Public School for coming along on the day.



67
children
attended





Thank you to the staff and students from St Thomas Aquinas School, Springwood Public School, Ellison Public School, and Winmalee Public School for coming along on the day



Mothers and Daughters Cultural Middle Eastern dance Workshop

SNCC collaborated with Shemiran Ibrahim to hold an Eastern European dance workshop for mothers and daughters. Held on Thursday, 1st of August 2019 it attracted 21 women – 9 adults; 4 girls (6-11 years); and 8 young women (12-18 years). A wonderful opportunity to share and enjoy something new and creative.



Maths Club

SNCC with the support of Ian McIntyre, a retired maths teacher, provided a regular Thursday afternoon opportunity for local high school students to brush up on their maths. This opportunity to learn together, catch up and share hot chips became a regular event during the school terms.



SNCC's Emergency Food Support

SNCC's Emergency Food Support service was dramatically challenged in March 2020 when the Centre needed to close in response to COVID-19. Along with many community services, SNCC needed to adapt quickly. Almost overnight we went from Centre pick-ups to contactless home deliveries and helping our clients set up online or telephone shopping accounts with local supermarkets.

We heard stories of parents with young children losing jobs and with no immediate Government help. We not only provided food hampers but also information on other sources of assistance. We communicated that our service was dependent on the continued wellness of staff and volunteers and also the continued generosity of community donors. The response has been heart-warming. Every week our donation box at Springwood IGA needs to be emptied. Our Facebook fundraising initiative reached its target, IGA gift vouchers and Coles gift cards were received and put towards the service. End of financial year monetary tax deductible donations have made a positive difference.

We acknowledge the amazing help of our volunteers, whether checking expiry dates, stocking shelves, making up food hampers or making home deliveries when recipients either don't have transport or can't get to the Centre when it is open.

Our sincerest thanks also to Springwood's Lloyds Sup IGA, SDA Warrimoo Church and the generosity of residents' donations.

Our partnerships with Winmalee Neighbourhood Centre, Bakehouse of Wentworth (Springwood) and Bakery Schwarz in Wentworth Falls enables fresh food to be added to non-perishable food and available in our Centre. At time of writing on Thursdays only.

We could not offer this service to people in our community without the continued support of our community members and local businesses.



In the 2019-2020 financial year SNCC provided over **1200 instances of food support** for individuals and families.



Blue Fringe Arts Festival October 2019



SNCC recognises the importance of supporting and advocating for mental health in the community and in October the popular and well-respected Blue Fringe Arts Festival is held as part of Mental Health Month. In its 28th year, the Festival features two main categories: literature and art.

Blue Fringe recognises the vital role creative arts play in supporting all members of the community. It continues to challenge stereotypes around mental health and recognises both the resilience and vulnerabilities of individuals who are managing mental health issues.

The Festival displays works by artists across literature and art. These range from short stories, poetry, sculpture, painting, textiles and photography.

The evolution and continuing success of the Blue Fringe Arts Festival is testament to the power of positive partnerships between several key organisations in the Blue Mountains, including: SNCC; Belong Blue Mountains; Aftercare; Ability Links; TAFE; local sponsors and volunteers.

The 2019 exhibition was a moving and inspiring display of art's potential to impact change, both for those who create it and those who experience it.



Mental Health First Aid



Since 2016 SNCC, Winmalee Neighbourhood Centre and Blackheath Area Neighbourhood Centre have partnered with Principal Master MHFA Instructor Jane Armstrong to deliver low cost Mental Health First Aid training across the mountains. Training workshops are tailored to:

- Youth Mental Health First Aid,
- Standard Mental Health First Aid,
- First Aid for the Suicidal Person and
- Mental Health First Aid for the Older Person.

Jane is a Master Mental Health First Aid Trainer who has worked in the mental health sector for 25 years with Lifeline and MHFA Australia. She brings with her a compassion and professionalism that creates the foundations of the training. With the support

and expertise of the partner neighbourhood centres Jane facilitates multiple courses though out the year. Jane does this work as a volunteer.

Living locally means Jane is committed to ensuring her community is skilled in mental health support and in reducing the stigma and isolation many people with mental illness can experience.

In the 12 month reporting period Jane has also trained to facilitate MHFA online ensuring that the partnership is active and relevant regardless of COVID restrictions.

SNCC is immensely grateful to Jane Armstrong for her commitment and dedication to her community.

In the second half of 2019, 5 workshop days took place attended by 41 students.

41

students

5

workshop days

Are You Inclusive?



DARE morning tea

Once a Month DARE Disability and SNCC partner to host a morning tea for the whole community. Held in the Centre it is a way of creating engagement opportunities for those in our community who have a disability and the broader community who may wish to strengthen their connection to people with a disability. It is a free event and the morning tea is often a space of laughter, stories and connection.

LGBTIQ

As part of its commitment to promoting diversity in the community and advocating for equality, SNCC continued to promote the rights of the LGBTQI community.

LGBTQI stands for Lesbian, Gay, Bisexual, Transgender, Queer or Questioning and Intersex.

The SNCC space at the Springwood HUB welcomes all members of the LGBTQI community and promotes events such as Wear It Purple Day and IDAHOT. All staff and volunteers undertake cultural awareness and sensitivity training.

International Women's Day

In March 2020, International Women's Day was again celebrated by Springwood Neighbourhood Centre and women from the community at its annual breakfast. This year was particularly exciting as it was a collaboration between the Neighbourhood Centre and students from Winmalee High School who partnered to present an all-day forum which tackled some of the questions which impact on young women and their lives particularly around equality.



The keynote speaker, Hayley Foster, CEO of Women's Safety NSW urged all present particularly the young women to educate themselves and to be impatient and persistent about the need for change and the need to 'find your allies as you can't do this alone'.

The students then participated in various workshops concluding with an open panel discussion which indicated that the interest in women's equality and the need to join together is paramount in the lives of the women of all ages in the Blue Mountains.



Summary of Topics

1. WHO AM I WHO ARE YOU?
2. ABOUT WOMEN'S SAFETY NSW
3. POLICY AND ADVOCACY AGENDA
4. GET INVOLVED!

... women's equality and the need to join together is paramount in the lives of the women of all ages in the Blue Mountains



Wednesday Afternoons in the Centre during school terms

We opened our Centre on Wednesday afternoons to a variety of different groups. This was very successful and included: *Peers in Recovery* – a support group for people living with a mental health condition; *RRR Revolution* – a group which is all about reusing, recycling and remaking. The third Wednesday of the month the local *Storytellers* get together to tell their stories and share their experiences. The fourth Wednesday *Artscope* was held, a group which combines creativity with support and information for those in the community with a mental health condition. In early 2020 *Artscope* and *Peers in Recovery* groups were merged into a new *Mental Health & Wellbeing* group.

These groups were a great success and continued until March 2020 and the enforced closure of the Centre.



Women With Words

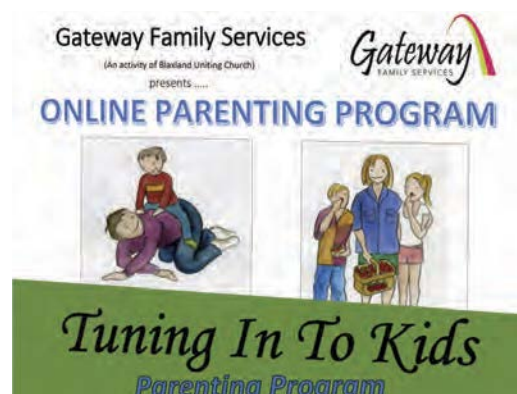


70
women

Local women came together to share their own life stories in October 2019. Over seventy women listened as women spoke of domestic violence, challenges in parenting, death of a family member and other topics and even though some of these topics were challenging, ultimately the stories left the audience with a sense of hope.

Gateway Family Services

SNCC has continued its long partnership with Gateway Family services in the provision of support groups for parents. Two sessions were held – “Floundering to Flourishing” and “Tuning into Kids”. Both sessions were well attended and provided parents in our community with new skills and connections for their parenting roles. We look forward to this partnership continuing when the current pandemic circumstances change.



Resilience and Preparedness - Get Ready events

As part of our yearly preparation for the bushfire season SNCC partnered with Valley Heights RFS, The Salvation Army and Fire & Rescue for an information session and BBQ event held in Sun Valley.

There was a terrific response from the local community to get together, share in a BBQ and receive information directly about how to prepare their homes and to be prepared. The children were not forgotten with many activities including learning how to juggle.

An information session targeting older members of the

community was also held during a Blue Mountains Food Services regular senior lunch.

Further activities to support our community to Get Ready continued throughout December 2019. Hayley Stone, a volunteer from the Valley Heights RFS, was in our Centre to provide training on the Fires Near Me app and general information for community members supporting them to feel confident in accessing this information. This community outreach proved to be very successful and appreciated.



TAX HELP

Bill Knagge, our wonderful Tax Help volunteer, helps people in the local community complete their tax returns online. This service typically runs from August to October each year.



Thank you to Emergency Services

After such a challenging fire season it was important for our community to be able to express their gratitude to our Emergency Services who worked so hard fighting fires. People were invited to write a message on a cut out leaf or on an animal and stick them on our paper tree in our Centre as a symbol of renewal and regrowth.



SNCC Groups and Activities

Each year Springwood Neighbourhood Centre supports its community to keep connected through the provision of a variety of groups and activities.

We are particularly fortunate to have a wonderful group of skilled and committed facilitators who go out of their way to support the groups for which they are responsible. If the groups are exercise classes then the facilitators are well trained and up to date with the latest trends. If groups fall within the arts and crafts area, then the facilitators are themselves well known in their field holding regular exhibitions in the local area and beyond.

We extend our sincere thanks to all of you and thank you for your continued support of your community and your neighbourhood centre.

Particular mention must be made about the Acoustic Club which has been part of the activities of SNCC since the mid 1990's and is committed to fostering performance in the community. During this year its long time facilitator Mark Hand moved away from the mountains and so a new facilitator was sought. Several regulars put their hand up including Stuart Hale, Maurice Kerkham and Jeanette Temesvary, ensuring continuation beyond Mark's departure. Soon after this the mandatory lockdown occurred, however the group has

recently returned and meets regularly while complying with COVID safe procedures. We thank Mark for his long commitment and wish him well.

In late March 2020 we, along with everyone else, had to cease all of our activities and to isolate. As a result, all of our groups had to comply with the NSW Government's requirements to deal with the Covid-19 pandemic. It was not long before many of the facilitators, particularly those delivering exercise classes became familiar with the wonders of technology and were 'zooming' classes to all of their participants. Community members were able to maintain their fitness and connection through these classes.

This has continued through to this financial year and in July 2020 many of the classes were able to resume face to face activities, following the government changes to safe distancing and other health requirements.

The arts and social groups continued to meet by establishing discreet Facebook groups, Zoom meetings and other forms of communicating and they also resumed their gatherings this financial year. The Art Social group held a successful Art Show in the Centre on same Sunday as the November 2019 Springwood Growers Market. Many people visited the display including Susan Templeman, MP.

The Shine Choir group looks forward





“
*I feel it is making
a difference to my
mobility issues*

– FRAN



“
*This class has
done so much
for me, I can
now carry my
shopping and it
does not seem
to be so heavy ...
I will be
80 this year*

– SYLVIA



to the time when able to meet again once restrictions lift and deemed safe for singers and musicians to express their love of song and music.

Thank you also to the venue hirers who have assisted us throughout these years to support our community through the provision of safe and secure environments.

SNCC continues to engage our community to remain connected to each other and to support their health and wellbeing through the provision of these activities.





Tanderra

The environment at Tanderra Out of School Hours (OOSH) is tailored with the children's safety, happiness and enjoyment at the forefront of any planning. As such, the children's requests and interests are considered when designing programs.

Highlights of the year included a visit from JD's World of Magic in July 2019. This was an inclusive puppet show that the children absolutely loved. Educational Facilitator Julie Zommers brought her own magic to the Centre with her puppet workshop. The children made their own puppets and wrote and enacted plays and skits.

By popular request we held Minecraft Master's Day with games and activities themed around this popular video game. The children also enjoyed trips to Inflatable World at St Mary's, Featherdale Wildlife Park in Doonside and the ever-popular Don Bosco's Sports Centre in St Mary's.

Other events enjoyed were the Year 6 afternoon teas on-the-town where the children spent time together as a group and discussed issues relevant to them, preparing for the





A highlight of the year included a visit from JD's World of Magic in July 2019

next phase of their lives transitioning to high school.

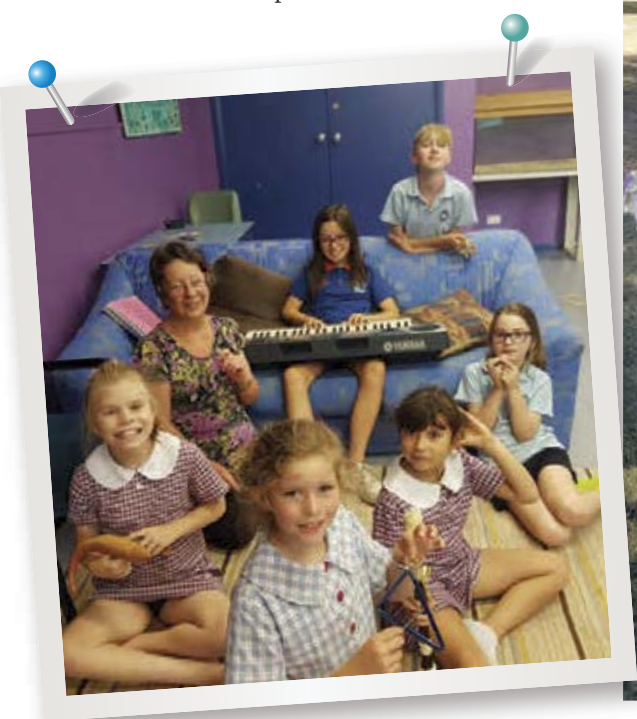
We were fortunate to have some special volunteers contribute to our service. Lisa Varjavandi's music classes each Tuesday were a wonderful addition. Lisa's calm manner with the children and her wealth of knowledge of music is much appreciated by the children, staff and parents.

Our wonderful yard maintenance crew have once again been invaluable, helping to keep the outside premises safe and clean. The volunteer crew follow environmentally sound principles and always with a smile, a laugh and lots of camaraderie.

We have missed volunteers who have needed to withdraw working during the coronavirus pandemic and we look forward to having them back in the future when possible.

The children loved creating gardens throughout the year and building up the compost to fertilise the soil. At harvest time, flowers were picked and used in craft projects, posies made and other ingenious creations. The children also made stalls "selling" herbs and vegetables for parents to take home and cook for dinner.

The 2020 year has brought an unprecedented challenge for all concerned when the coronavirus pandemic struck in March. At the beginning many children withdrew from school attendance when children of essential workers only, were encouraged to attend. Many parents began working from home for a period as the nation grappled with the situation. At Tanderra, we found ourselves facing uncertainty as attendance numbers plummeted. This was





experienced right across the sector and the government quickly responded with a financial package. In return for government support, services were required to offer free childcare to all families from April to July. This measure meant that services were able to remain open to provide care for the children of essential workers. It also saved the childcare sector from widespread calamity. This period presented new challenges for staff and management of our service who worked hard to meet these. Staff have needed to take up training to equip themselves with the requirements needed to keep children, staff and the community safe. We have had to introduce policies and procedures and manage our service around these new compliance requirements.

We have also needed to provide security and reassurance to the many children and parents by recent events. Tanderra's Co-ordinator, Suzanne Allnutt, is most grateful to staff for their dedication and commitment and for the way in which they have worked together to meet every challenge with professionalism.

Tanderra is proud of its philosophy, a place where all children are respected, their uniqueness is treasured and their voices are heard. With these core values, we work to build an environment where all children feel at home and where children of all abilities and backgrounds feel fully included, supported and have a sense of belonging.

Suzanne Allnutt
Tanderra Coordinator



**Tanderra
Statistics**

2019-2020



NUMBER OF FAMILIES
REGISTERED

130

TOTAL NUMBER OF
CHILDREN ENROLLED

203

BEFORE AND AFTER SCHOOL
CARE DAYS OPEN

205

VACATION CARE DAYS OPEN

45

TOTAL NUMBER OF DAYS
OPEN

250

NUMBER OF CHILDREN
ATSI ENROLLED

13

NUMBER OF CHILDREN
WITH ADDITIONAL
NEEDS ENROLLED

8

NUMBER OF CHILDREN
FROM CALD BACKGROUND
ENROLLED

21

BEFORE SCHOOL CARE
BOOKINGS

5,824

AFTER SCHOOL
CARE BOOKINGS

10,778

VACATION CARE BOOKINGS

1,536

PUPIL FREE DAYS
BOOKINGS

56

TOTAL NUMBER OF
ANNUAL BOOKINGS

18,194

Aged Care





Dementia Carers Support Group

Our friendly and welcoming group offers support, advice and a listening ear for those caring for someone who has dementia – whether they are living at home or elsewhere. With approximately 459 000 people in Australia currently living with Dementia, it is vital we continue to recognise the important role of the Carer.

The Dementia Carers Support group continued to meet throughout the year and welcomed several new members. Group highlights included attending a concert at the Joan Sutherland Centre as part of Carers Week and of course, our annual Christmas lunch.

If you or someone you know is caring for a person who has dementia, please don't hesitate to contact Springwood Neighbourhood Centre (02 4751-3033) or Belong Blue Mountains (02 4782-1117) to find out more about joining this wonderful group.

Jo Newton

Dementia Carers Support Group Facilitator



Volunteer Home Visitors

Many of the services which SNCC offer are aimed at providing support and opportunities for older members of our community to stay well and connected. It is well known that this engagement not only reduces loneliness but also increases the feeling of wellness and is an important factor for ageing well. Our Volunteer Home Visitors program provides social support to elderly people living at home, enabling them to live independently and be connected to their community.

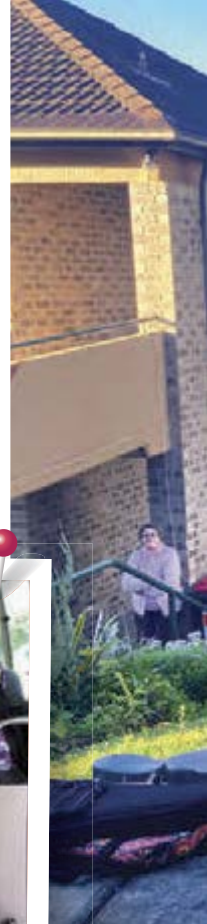
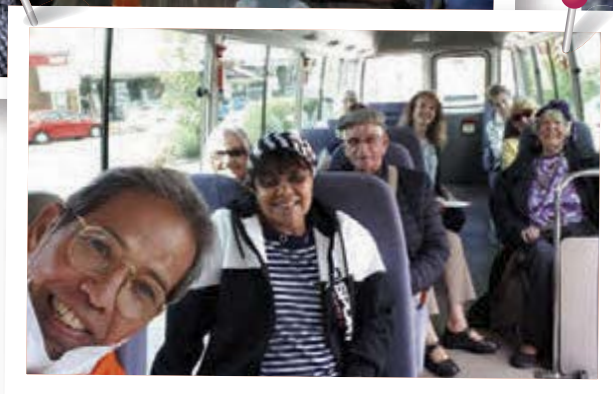
SNCC's VHV volunteers commit to an hour or two per week or fortnight to spend with their client. They may visit them at home, take them out shopping, go for a walk or have a coffee in a local café. For clients who are isolated, frail or living with a disability, this makes an enormous difference to their wellbeing and sense of connection. The VHV service also provides valuable assistance to family members who are often juggling work and caring responsibilities.

During a general conversation between a VHV client and daughter (and carer), the daughter commented that having a Volunteer Home Visitor to spend time with her mother was "a god-send". Both the mother and daughter spoke very highly of the volunteer and commended her on the thought and care she puts into planning activities with the mother.

VHV volunteers vary in background, age and experience, however one thing they all have in common is a generous, caring and positive outlook. Many have chosen to volunteer their time because they would like to give something to their community, to make a difference to a person's life and to develop a friendship with someone they would not otherwise know. The sense of meaning and purpose that volunteering provides is incredibly rewarding and inspiring. At times it can also be challenging and SNCC's volunteers have access to regular training, support and opportunities to interact with other volunteers.

In the months before COVID restrictions the VHV program offered a range of social outings and events for seniors.

Our senior Meet and Eat lunches, held in collaboration with Blue Mountains Food Services, were also very popular. In addition to delicious food, these events provided fabulous entertainment and a festive atmosphere. Transport to and from the lunches was offered to those who needed assistance. Themes such as *White Christmas* (held in winter) and *Celebrate Spring* marked the seasons and gave



attendees an opportunity to dress up for the occasion and socialise with others in the community.

A highlight of December was the Christmas lights bus trip. This started with dinner at Springwood Sports Club before heading down the mountains to view the spectacular Christmas light displays in Emu Plains, Glenbrook, Blaxland and surrounding suburbs. In February the bus took passengers up to Mt Vicks Flicks for a movie followed by lunch at Blackheath.

There have of course been challenges this year and VHV service delivery has had to adapt to a COVID-19 lockdown and the many restrictions that have been put in place. Face-to-face interactions were suspended between March and July during which time volunteers continued to support their clients via regular phone calls, handwritten letters and the occasional home-baked cake, book or bunch of flowers left at the doorstep. SNCC offered a shopping and home delivery service to those who needed it and the VHV Coordinator was available to both clients and volunteers over the phone at all times.

In order to provide some live entertainment and much-needed cheer during isolation, SNCC organised for a local ukulele group, SPUKE, to perform some songs outside of clients' homes at Buckland Retirement Village. This led to much toe-tapping and many smiles and gave residents both something to look forward to and look back on. It was a welcome relief from the monotony of staying at home.

Watching someone regain confidence and enthusiasm for life is a heart-warming experience and something that keeps volunteers coming back year after year. Being able to socially engage in their local neighbourhood is a priceless gift for clients who would otherwise be alone and vulnerable. The VHV scheme embodies everything SNCC stands for: community, inclusivity, care and creativity.

Tonje Akerholt
VHV Coordinator



A highlight of the year was the VHV Letter-Writing Project run by SNCC in collaboration with Faulconbridge Public School. Students from a 5/6 class wrote a letter to every VHV client, asking about their experience during isolation and previous pandemics they may have lived through, recounting their own COVID troubles and enquiring about their family history.

For many children it was their first time writing a letter. There was much excitement amongst them when replies from their clients started to arrive. Some of the personal stories involved significant historical moments such as a missed trip on the Titanic due to illness and a pioneering female Reverend. Others told tales of life without technology and the modern comforts which we take for granted today.

Feedback from the clients was overwhelmingly positive. Finding something handwritten in the letterbox, having someone show an interest in their life, delving into past memories and then focusing on the task of writing an entertaining and meaningful letter back to the student broke the monotony of isolation and gave them a sense of purpose and connection. "It made my day", "I found out some interesting things about my family", "It was hard writing a letter, but I really enjoyed it", "It was a lovely surprise to find a letter written to me!" were some of the comments made when asked about their response to the project.

Community Visitors Scheme

The nationally funded Community Visitors Scheme (CVS) continued to provide a valuable service to our local community in 2019. Our team of caring and compassionate volunteers visited residents living in Buckland Aged Care, Uniting Springwood and Opal Endeavour aged care facilities. CVS volunteers also visited Home Care Package recipients living in their own homes. They provided many hours of social support and friendship to those who perhaps otherwise would not have received a visitor.

One highlight during this time relates to a new CVS volunteer who visits a gentleman in Uniting. Both the volunteer and client have a mutual love of music – in particular, the piano. This gentleman had stopped playing the piano in recent years, when his wife passed away, as they had always played together. It has been wonderful seeing and hearing about the regular piano playing sessions that have been occurring now! Not only does the volunteer play the piano but she also shares the same interest in Jazz and Blues music.

This is just one of many examples of how a simple connection between people can have a positive impact on the wellbeing of someone who feels lonely and isolated. None of this would be possible without our wonderful CVS volunteers, who give up their time every week to make a difference in someone's life. I would like to thank them all for being such an amazing group of people!

I would like to thank CEO Toni Quigley for her ongoing support of the CVS program. Thank you also to the SNCC Board and staff and everyone involved with this program at our local aged care facilities and services.

Jo Newton
CVS Coordinator

“Be Connected” – the importance of digital inclusion

Springwood Neighbourhood Centre is a member of a nationwide initiative which aims at empowering all Australians to thrive in a digital world. The Be Connected network provides online resources and a network of community partners which supports and helps develop everyone’s digital skills and confidence.

As part of this thriving network Springwood Neighbourhood Centre provides digital information events, small group computer classes and one on one free sessions. You could think of a digital mentor session is like having a computer buddy to help with pesky technology ‘road blocks’ we all encountered regardless of skill level.

“Be Connected is an Australia wide initiative empowering all Australians to thrive in a digital world. It has online learning resources as well as a Network of community partners - the Be Connected Network - who offer support so you can develop your digital skills and confidence.” <https://beconnected.esafety.gov.au/>

In August 2019, SNCC joined with another Be Connected partner, JobQuest and held a successful information event at our Centre on same day as the monthly Growers Market. We followed up enquiries and invited interested community members to a later event during Get Online Week in October.

Our Get Online Week event focused on online safety. An opening question for discussion was:

“What is the bare minimum I need to know to be safe on the internet?”

Terminology such as, “phishing”, “malware” were explained and along with the many different forms of identity theft and online scams. Other topics such as the NBN were touched on as well. We were fortunate to have James Henderson, an information technology specialist with over 30 years of experience facilitating our interactive and informative event.

We also acknowledge and thank all SNCC volunteer digital mentors during 2019-2020 David, Jeanine and Laurette. Since March 2020 and COVID-19 restrictions, our computer help service has been impacted.

However, if you or someone you know is interested, then either drop into the Centre and speak to our front desk volunteers or call our main number 02 4751 3033 and we will see how we can help you. Or alternatively refer to another Be Connected partner organisation. Please do not hesitate to reach out for assistance to build skills and confidence in using technology.



Information Day in August 2019 attracted

69
participants

Get Online Week event in October 2019 was attended by

26

Digital Mentoring students helped during 2019-2020 were

59

Talking Gazette

The longest serving group of SNCC volunteers are those who support the recording and distribution of the Blue Mountains Talking Gazette. Formed in 2005 this group has met weekly since then to ensure that members of the Blue Mountains community who are sight impaired or who have other impairments which makes reading a newspaper difficult, receive an audio version of that Gazette. This is greatly appreciated by many of our older

residents and this year they have received support from the Rotary Clubs of the Blue Mountains and also a volunteer grant which will be used to purchase new and updated equipment which will make their task easier.

This year one of the longest serving volunteers of this group Pamela Lamin passed away. Pamela was an elegant, vibrant and enthusiastic volunteer and she is missed by us all.



Volunteers



SNCC's volunteers

SNCC's volunteers' involvement with many activities ensures our community members stay engaged and connected thus supporting a resilient and vibrant community.

The staff of SNCC could not provide all the support and services which we do without the ongoing contributions of our volunteers. Through the Volunteer Home Visitors and Community Visitors Scheme services, much needed support is provided to members of our aged care community ensuring that they stay connected and engaged which reduces their isolation and loneliness.

Our volunteers also engage with the community by supporting us in the Neighbourhood Centre at the Hub. Their understanding of the services available throughout the community and their willingness to engage with community means that any query is handled with professionalism. Visitors to the Centre are also welcome to enjoy a cup of tea or coffee while chatting.

Volunteers undertake many other tasks including facilitating arts and social groups along with the many administrative tasks and the very important Emergency Food Support service.

Volunteers have been key in assisting SNCC modify its Emergency Food Support services in adding home deliveries subsequent to COVID-19 and its impact from March 2020. Home visiting volunteers have engaged in creative ways to stay connected to their clients and helping reduce the real challenges of isolation. Volunteers continue to provide much needed administrative support to the staff in the Centre.

Volunteering Training and National Standards

As part of our philosophy of providing volunteers with as many opportunities to improve their skills and opportunities we support and integrate the National Standards for Volunteer Involvement and these eight standards in all that we do as well as being highlighted in our training schedule.

Training sessions attended by SNCC volunteers in the 2019-2020 financial year included:

- Accidental Counselling – core skills for being an Effective Helper
- Are You Inclusive training by DARE Disability



Toni Quigley, CEO

Thank You to our Volunteers

On December 12th, 2019 staff thanked the volunteers at a morning tea. The highlight at this event included an enjoyable training session facilitated by Tracey Willow on the Principles Important to Volunteering.

In May 2020 during Volunteer Week, the contribution of volunteers was acknowledged via our Facebook page as COVID-19 prevented a traditional in person event.

SNCC recognises the contribution of all of our volunteers and thanks them for their continued service to the community.

- COVID-19 online infection control training
- COVID-19 SNCC Safety Plan training on new processes
- Data entry training
- Digital mentoring for Centre volunteers
- First Aid training
- General awareness on community organisations and SNCC Services
- Principles important to volunteering
- My Aged Care website and portal awareness training
- Safe Conversations
- Setting limits and boundaries when volunteering
- Volunteer visiting training (CVS & VHV)
- Understanding Body Language in Aged Care



Imelda Eames, staff member



SNCC's volunteers

Board Directors

Diane Burn
Shane Crisford-Eade
Keith Dowling
Tracy Kane-White
Joanne Ridley
Andrea Turner-Boys
Lynette White

Centre Volunteers

Frances Banyard
Trish Bennett
Kay Briggs
Sandy Facer
Marcia Gold
Ann Ludbrooke
Noreen Mason
Heather Mitchell
Phil Mullens
Barbara Ray
Leesa Rayner
Russell Searle
Alyssa Smith
Gillian Taylor-Reynolds
Lisa Varjavandi

Community Visitors Scheme

(up to 31 December 2019, transferred to Belong BM as from January 2020)

Meaghan Blattman
Toni Cornado-Cornet
Laura Daly
Marlene Doublesin
Vicki Glew
James Henderson
Nerine Hide
Fiona Hill
Melissa Hill
Jill Hogwood
Petra Huber
Louise Hughes
Chris Hughes
Jenny Hughes
Marion Hughes
Wendy Hutchinson
Katherine MacLatchy
Elinor Maguire
Noreen Mason
Lily O'Leary-Hunt
David Rees
Phiona Stone
Ann Thomas
Agnes Van der hoff
Lynette White

Digital Mentoring

Jeanine Gallazi
Laurette Lideros
David Taylor

Group Facilitors

Jenny Davies
Raising Kin facilitator
Stuart Hale
Acoustic Club
Christeen Hull
Art Social Group
Alyssa Smith
Mental Health & Wellbeing Group
Nicole Giezekamp
Community SHINE Choir
Kath Thorburn
Exercise at Ellison
Gillian Powell
FUNctional Fitness Instructor
Gillian Taylor-Reynolds
Sing-a-Long Group
Chris Hughes
Social Cards & Games
Anna Fisher
Tai Chi Qigong Instructor
Elizabeth Godleman
Yoga & Relaxation

Maths Tutoring

Ian McIntyre
Maths Tutor

Talking Gazette

Pat Allan
Geraldine Cook
Alastair Fyfe
Sheila Fyfe
Mick McGillion
Sherilyn Page
Anne Palmer
Jan Parry
Jacqueline Shimmell
Dianne Thorpe
Noeleen Udall
Talking Gazette Coordination



Tanderra

Josiah Bamfer
Tanderra Yard Maintenance
Deb McDowell
Tanderra Yard Maintenance
Tim Quinn Smyth
Tanderra Yard Maintenance
Lisa Varjavandi
Tanderra Music Workshops

Tax Help

Bill Knagge

Volunteer Home Visitors

Adelaide
Tanya Belon
Chelsea Bentley
Lynette Birrell
Ann Finlayson
Robin Green
Nerine Hide
Jim Holdaway
Siska Koolen
Alison Korbula
Helen Lewsley
Karen McDonald
Phil Mullens
Sue Noske
Adriana Novosel
Barbara Ray
Leesa Rayner
Marianne Rutten
Lisa Varjavandi
Robyn Whitelock

Our **Financials**



Treasurer's Report



This financial year has been one of the most challenging years for the world as a whole. Our small organisation has not been immune to these challenges but we have been supported financially by local, state and federal governments and by the community via online funding initiatives.

The audited accounts for 2019-2020 financial year show a significant improvement in our financial performance which can largely be attributed to the various COVID relief payments, Jobkeeper and reductions in project and operational expenditure.

The improved financial position and confirmation that recurrent grant funding is guaranteed for another year places SNCC in a comfortable position for the future.

As with every new year the operational and employment expenses are expected to rise but we have set sufficient provisions to cover these inevitable expenses and have also provided for the ongoing maintenance of our property.

The SNCC Balance Sheet as at 30 June 2020 clearly demonstrates that the organisation is solvent and able to meet the expectations of funding bodies and the community.

The SNCC Board and management team have been actively seeking opportunities to diversify our funding streams and program offerings, while also ensuring that we meet all our contractual and legal reporting responsibilities.

I would like to acknowledge the hard work of Toni and her team, maintaining the operations during a turbulent and ever changing financial and regulatory environment.

The Board looks forward to continue working with staff, volunteers, funding bodies and community members to provide a forward thinking and successful local community service in 2020-2021.

Diane Burn
Treasurer

STATURE FINANCIAL GROUP

T (02) 4577 6688
E windsor@staturefinancialgroup.com.au
W staturefinancialgroup.com.au
P PO Box 529, Windsor, NSW, 2756

AUDIT CERTIFICATE

Standard full Audit Certificate by a Qualified Accountant in respect of Community Funded Organisations.

I, Sue Ann Paine, of Shop 9, 100 George Street, Windsor NSW 2756, being a qualified accountant within the meaning of the Community Funding Program, do hereby certify that I have examined the books and financial records of **Springwood Neighbourhood Centre Co-operative Limited**.

In my opinion the financial statements present fairly the financial position of the organization and the results of its operations for the year ended 30 June 2020 in accordance with the Australian Accounting Standards.

I have satisfied myself that:

- a) Establishment of all reserves/provisions is justified and represents funds set aside for Long Service Leave, Annual Leave and Relief Workers and Maternity Leave.
- b) Payments to associated and/or affiliated bodies have been adequately disclosed.

Signed



Sue Ann Paine, FIPA

Date: 16 September, 2020

Qualification: Fellow, Institute of Public Accountants
No: 104947

Liability limited by a scheme approved under Professional Standards Legislation

"Stature" is comprised of: Stature ARW Accounting Pty Ltd, ABN 61 820 298 752. Stature Mortgage Solutions Pty Ltd, ABN 79 138 982 804, Stature Leasing Services Pty Ltd t/as Iconex Leasing, ACN 147 948 089, Stature Wealth Management Pty Ltd trading as Stature Financial Group, ABN 57 130 423 700 which is an authorised representative and credit representative of Hillross Financial Services Pty Ltd, ABN 77 003 323 055, AFSL and Australian Credit Licensee. Hillross is not involved with, and not responsible for, the provision of accounting, mortgage or leasing services. This letter contains general information only. It does not take into account your objectives, financial situation or needs. Please consider the appropriateness of the information in light of your personal circumstances. Before you make any investment decision, you should read the current Product Disclosure Statement. If you decide to purchase or vary a financial product, your Stature Wealth Management adviser, Hillross and other companies within the AMP Group will receive fees and other benefits, which will be a percentage of the premium you pay and/or the advice fee you agree with us. Further details are available from us or Hillross, who can be contacted on 1800 445 767 or email at info@hillross.com.au

Sydney

Level 4, 92 Pitt St
Sydney NSW 2000

Melbourne

Suite 1030/L10,
1 Queens Rd
Melbourne VIC 3004

Bella Vista

A28, 24-32 Lexington Drive
Bella Vista, NSW, 2153
(Building A, Level 2)

Brisbane

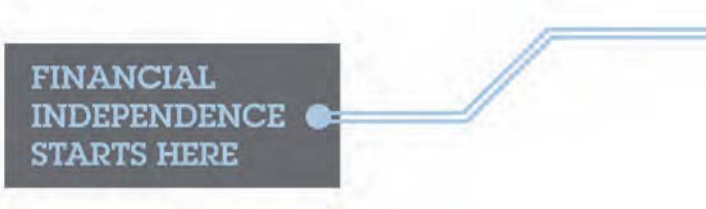
Level 3, 349 Coronation Dr
Milton QLD 4064

Windsor

Shop 9, 100 George St
Windsor NSW 2756

Adelaide

82 Melbourne Street
North Adelaide SA 5006



FINANCIAL
INDEPENDENCE
STARTS HERE

STATURE FINANCIAL GROUP

T (02) 4577 6688
E windsor@staturefinancialgroup.com.au
W staturefinancialgroup.com.au
P PO Box 529, Windsor, NSW, 2756

INDEPENDENT AUDITOR'S REPORT TO THE MEMBERS OF SPRINGWOOD NEIGHBOURHOOD CENTRE CO-OPERATIVE LIMITED

Report on the Financial Report

I have audited the accompanying financial report of Springwood Neighbourhood Centre Co-operative Limited, being a special purpose financial report, which comprises the Statement by Members of the Board of Management, the Statement of Comprehensive Income, the Statement of Financial Position, the Statement of Accounting Policies and explanatory notes for the financial year ended 30 June 2020.

Board of Management's Responsibility for the Financial Report

The Board of Management of the Co-operative is responsible for the preparation and fair presentation of the financial report in accordance with Australian Accounting Standards (including Australian Accounting Interpretations). The Board of Management is responsible for such internal control as management determines is necessary to enable the preparation of the financial report that is free from material misstatement, whether due to fraud or error, by selecting and applying appropriate accounting policies, as stated in Note 1, and making accounting estimates that are reasonable in the circumstances.

Auditor's Responsibility

My responsibility is to express an opinion on the financial report based on my audit. I conducted my audit in accordance with Australian Auditing Standards. Those Standards require that we comply with relevant ethical requirements relating to audit engagements and plan and perform the audit to obtain reasonable assurance whether the financial report is free from material misstatement.

An audit involves performing procedures to obtain audit evidence about the amounts and disclosures in the financial report. The procedures selected depend on the auditor's judgement, including the assessment of the risks of material misstatement of the financial report, whether due to fraud or error. In making those risk assessments, the auditor considers internal control relevant to the entity's preparation and fair presentation of the financial report in order to design audit procedures that are appropriate in the circumstances, but not for the purpose of expressing an opinion on the effectiveness of the entity's

Liability limited by a scheme approved under Professional Standards Legislation

"Stature" is comprised of: Stature ARW Accounting Pty Ltd, ABN 61 820 298 752. Stature Mortgage Solutions Pty Ltd, ABN 79 138 982 804, Stature Leasing Services Pty Ltd t/as Iconex Leasing, ACN 147 948 089, Stature Wealth Management Pty Ltd trading as Stature Financial Group, ABN 57 130 423 700 which is an authorised representative and credit representative of Hillross Financial Services Pty Ltd, ABN 77 003 323 055, AFSL and Australian Credit Licensee. Hillross is not involved with, and not responsible for, the provision of accounting, mortgage or leasing services. This letter contains general information only. It does not take into account your objectives, financial situation or needs. Please consider the appropriateness of the information in light of your personal circumstances. Before you make any investment decision, you should read the current Product Disclosure Statement. If you decide to purchase or vary a financial product, your Stature Wealth Management adviser, Hillross and other companies within the AMP Group will receive fees and other benefits, which will be a percentage of the premium you pay and/or the advice fee you agree with us. Further details are available from us or Hillross, who can be contacted on 1800 445 767 or email at info@hillross.com.au

Sydney

Level 4, 92 Pitt St
Sydney NSW 2000

Melbourne

Suite 1030/L10,
1 Queens Rd
Melbourne VIC 3004

Bella Vista

A28, 24-32 Lexington Drive
Bella Vista, NSW, 2153
(Building A, Level 2)

Brisbane

Level 3, 349 Coronation Dr
Milton QLD 4064

Windsor

Shop 9, 100 George St
Windsor NSW 2756

Adelaide

82 Melbourne Street
North Adelaide SA 5006

FINANCIAL
INDEPENDENCE
STARTS HERE

STATURE FINANCIAL GROUP

T (02) 4577 6688
E windsor@staturefinancialgroup.com.au
W staturefinancialgroup.com.au
P PO Box 529, Windsor, NSW, 2756

internal control. An audit also includes evaluating the appropriateness of accounting policies used and the reasonableness of accounting estimates made by the committee, as well as evaluating the overall presentation of the financial report.

We believe that the audit evidence we have obtained is sufficient and appropriate to provide a basis for our audit opinion.

Independence

In conducting my audit, I have complied with the independence requirements of the Australian professional ethical pronouncements.

Auditor's Opinion

In my opinion:

- i) The financial report gives a true and fair view of the financial position of Springwood Neighbourhood Centre Co-operative Limited as at 30 June 2020, and of its performance and its cash flows for the year ended in accordance with the Australian Accounting Standards; and
- ii) The financial report also complies with the accounting policies described in Note 1 to the financial statements.

Signed on: 16 September, 2020



Sue Ann Paine, FIPA
Institute of Public Accountants

Liability limited by a scheme approved under Professional Standards Legislation

"Stature" is comprised of: Stature ARW Accounting Pty Ltd, ABN 61 820 298 752. Stature Mortgage Solutions Pty Ltd, ABN 79 138 982 804, Stature Leasing Services Pty Ltd t/as Iconex Leasing, ACN 147 948 089, Stature Wealth Management Pty Ltd trading as Stature Financial Group, ABN 57 130 423 700 which is an authorised representative and credit representative of Hillross Financial Services Pty Ltd, ABN 77 003 323 055, AFSL and Australian Credit Licensee. Hillross is not involved with, and not responsible for, the provision of accounting, mortgage or leasing services. This letter contains general information only. It does not take into account your objectives, financial situation or needs. Please consider the appropriateness of the information in light of your personal circumstances. Before you make any investment decision, you should read the current Product Disclosure Statement. If you decide to purchase or vary a financial product, your Stature Wealth Management adviser, Hillross and other companies within the AMP Group will receive fees and other benefits, which will be a percentage of the premium you pay and/or the advice fee you agree with us. Further details are available from us or Hillross, who can be contacted on 1800 445 767 or email at info@hillross.com.au

Sydney

Level 4, 92 Pitt St
Sydney NSW 2000

Melbourne

Suite 1030/L10,
1 Queens Rd
Melbourne VIC 3004

Bella Vista

A28, 24-32 Lexington Drive
Bella Vista, NSW, 2153
(Building A, Level 2)

Brisbane

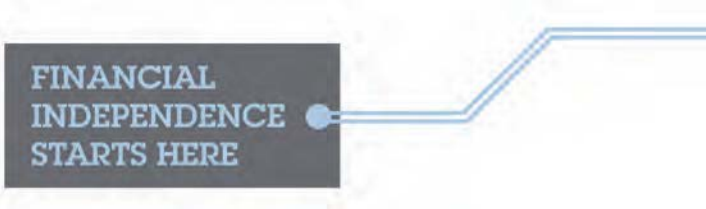
Level 3, 349 Coronation Dr
Milton QLD 4064

Windsor

Shop 9, 100 George St
Windsor NSW 2756

Adelaide

82 Melbourne Street
North Adelaide SA 5006



FINANCIAL
INDEPENDENCE
STARTS HERE

Springwood Neighbourhood Centre Co-operative Ltd
PROFIT & LOSS STATEMENT 01 JULY 2019 TO 30 JUNE 2020

	2019-2020	2018-2019
INCOME		
SNC Operating Grant & ERO - DCJ	\$208,747	\$201,664
CVS Funding - DoH	\$0	\$23,539
CVS Funding - Belong	\$39,762	\$19,950
VHV Operating Grant - DoH CHSP	\$66,619	\$65,563
VHV Social Inclusion - Belong DoH CHSP	\$18,239	\$19,347
VHV Social Transport - Belong	\$616	\$0
Good Things Foundation - Be Connected Grants	\$3,000	\$2,000
Mental Health Month Grant	\$0	\$1,017
FACS - Grandparents Day Grant	\$4,200	\$0
FACS - Seniors Festival Grant	\$1,000	\$0
Older Australians Grant	\$4,000	\$0
DSS - VHV Volunteer Grant	\$4,545	\$0
Carers NSW Grant	\$273	\$300
Rotary - Talking Gazette Donation	\$2,180	\$0
Tanderra Vacation Care - DET	\$9,185	\$10,021
Tanderra - Centrelink Paid Parental Leave	\$6,483	\$6,618
Tanderra Childcare Fees	\$182,949	\$223,113
Tanderra ECEC - CCS Fees	\$203,650	\$251,466
Reimbursements	\$3,827	\$0
CCS C-19 Relief Payments	\$69,990	\$0
Donations & Fundraising	\$7,388	\$9,372
Interest	\$3,509	\$4,820
Memberships	\$414	\$559
Room Bookings	\$1,860	\$0
Projects & Events	\$20,993	\$36,244
VHV Groups	\$4,852	\$10,610
JobKeeper Subsidy	\$87,000	\$0
ATO Cash Flow Boost C-19	\$29,532	\$0
TOTAL INCOME	\$984,813	\$886,203
EXPENSES		
Employment Expenses	\$683,572	\$682,554
Insurance	\$13,025	\$11,216
Operational Expenses	\$100,303	\$123,095
Projects & Events	\$20,758	\$38,377
Rent Expenses & Utilities	\$48,302	\$50,059
Venue Hire	\$10,670	\$14,791
Volunteer Expenses	\$4,146	\$6,242
Grants Expended	\$0	\$292
TOTAL EXPENSES	\$880,776	\$926,626
OTHER INCOME		
Funds Carried Forward	\$19,597	\$56,907
Internal Charges Received	\$132,974	\$109,854
TOTAL OTHER INCOME	\$152,571	\$166,761
OTHER EXPENSES		
Unexpended funds & transfers from Reserves	\$29,440	\$5,834
Internal Charges Paid	\$123,901	\$129,854
TOTAL OTHER EXPENSES	\$153,341	\$135,688
NET PROFIT / LOSS	\$103,267	-\$9,350

Springwood Neighbourhood Centre Co-operative Ltd

BALANCE SHEET AS AT 30 JUNE 2020

	2019-2020	2018-2019
ASSETS		
Current Assets		
Bank Accounts & Petty Cash	\$185,584	\$110,230
Co-op Debtors	\$30,000	\$0
Term Deposits	\$240,307	\$237,460
Non-Current Assets		
Land & Buildings	\$1,195,733	\$1,200,833
Furniture & Fittings	\$2,800	\$0
TOTAL ASSETS	\$1,654,424	\$1,548,523
LIABILITIES		
Grants in Advance	\$39,598	\$32,023
Leave Provisions	\$73,145	\$86,757
Employment Liabilities	\$9,196	\$3,521
Holding Deposits	\$11,760	\$13,200
Trade Creditors	\$12,791	\$0
GST Liabilities	\$1,136	\$8,425
Unexpended Funds	\$6,615	\$7,681
Other Provisions	\$56,979	\$56,979
TOTAL LIABILITIES	\$211,220	\$208,586
NET ASSETS	\$1,443,204	\$1,339,937
EQUITY		
Retained Earnings	\$518,937	\$528,287
Asset Revaluation - Land	\$821,000	\$821,000
Current Earnings	\$103,267	-\$9,350
TOTAL EQUITY	\$1,443,204	\$1,339,937

Springwood Neighbourhood Centre Co-operative Ltd
**NOTES TO AND FORMING PART OF THE ACCOUNTS
 FOR THE YEAR ENDED 30 JUNE 2020**

Note 1. Statement of Significant Accounting Policies

The financial report is a general purpose financial report that has been prepared for the use by the members of SNCC in accordance with the requirements of the Australian Charities and Not-for-Profits Commission act 2012, the Corporations Act 2001 and Australian Accounting Standards and other authoritative pronouncements of the Australian Standards Board. A statement of compliance with the International Financial Reporting Standards (IFRS) cannot be made due to the Group Applying not-for-profit specific requirements contained in the Australian Accounting Standards.

The financial report covers Springwood Neighbourhood Centre Co-operative Limited as an individual entity.

The following is a summary of the material accounting policies adopted by the Board Directors who have determined that such policies are appropriate to meet the needs of the members in the preparation of the financial report. The accounting policies have been consistently applied unless otherwise stated.

A) Basis of preparation

The financial report has been prepared on an accruals basis and is based on historical cost and does not take into account changing money values or, except where stated, current valuations of non-current assets for which the fair value basis of accounting has been applied.

B) Accounting Policies

a) Plant and Equipment

Each class of property, plant and equipment is carried at cost less, where applicable any accumulated depreciation and impairment losses.

The carrying amount of plant and equipment is reviewed annually to ensure it is not in excess of the recoverable amount from those assets. The recoverable amount is assessed on the basis of the expected net cash flows that will be received from the

assets employed and subsequent disposal. The expected net cash flows have not been discounted to present values in determining the recoverable amounts.

All other assets acquired during the year have been expensed at the date of purchase.

b) Depreciation

The depreciable amount of all fixed assets are depreciated over the useful lives of the asset to SNCC commencing from the time the asset is held ready for use.

The asset residual values and useful lives are reviewed, and adjusted if appropriate, at each balance sheet date.

c) Employee benefits

Provision is made for the liability for employee entitlements arising from services rendered by employees to balance date. Employee entitlements have been measured at the amount expected to be paid when the liability is settled. Any re-measurements arising from experience adjustments and changes in assumptions are recognised in profit or loss in the periods in which the changes occur. The Committee has determined that these amounts are adequate.

d) Provisions

Provisions are measured when SNCC has a legal or constructive obligation for which it is probable that the outflow of economic benefit will result and that the outflow can be measured reliably, based on the most reliable evidence available at the reporting date, including the risks and uncertainties associated with the present obligation. No liability is recognised if an outflow of economic resources as a result of present obligations is not probable. Such situations are disclosed as contingent liabilities, unless the outflow of resources is remote in which case no liability is recognised. The Committee has determined that these outflows are adequate.

Springwood Neighbourhood Centre Co-operative Ltd
**NOTES TO AND FORMING PART OF THE ACCOUNTS
 FOR THE YEAR ENDED 30 JUNE 2020**

e) Income taxes

No provision for income tax has been raised as the entity is exempt from income tax under Div. 50 of the *Income Tax Assessment Act 1997*.

f) Cash and Cash Equivalents

Cash and cash equivalents comprise cash on hand and demand deposits, together with other short-term, highly liquid investments that are readily convertible into known amounts of cash and which are subject to an insignificant risk of changes in value.

g) Revenue

Revenue comprises revenue from government grants, fundraising, donations, interest and memberships.

Interest revenue is recognised on a proportional basis taking into account the interest rates applicable to the financial asset.

Revenue from the rendering of service is recognised upon the delivery of the service to the customers and is measured at fair value of the consideration received or receivable after taking into account any trade discounts and volume rebates allowed.

h) Government Grants

A number of the entity's programs are supported by grants received from the federal, state and local governments.

If conditions are attached to a grant which must be satisfied before the entity is eligible to receive the contribution, recognition of the grant as revenue is deferred until those conditions are satisfied.

Where a grant is received on the condition that specified services are delivered to the grantor, this is considered a reciprocal transaction. Revenue is recognised as services are performed and at year end a liability is recognised until the service is delivered.

Revenue from a non-reciprocal grant that is not subject to conditions is recognised when the entity obtains control of the funds, economic benefits are probable and the amount can be measured reliably. Where a grant may be required to be repaid if certain conditions are not satisfied, a liability is recognised at year end to the extent that conditions remain unsatisfied.

i) Goods and Services Tax (GST)

Revenues, expenses and assets are recognised net of the amount of GST, except where the amount of GST incurred is not recoverable from the Australian Taxation Office. In these circumstances, the GST is recognised as part of the cost of acquisition of the asset or as part of an item of the expense. Receivables and payables in the balance sheet are shown inclusive of GST.

Cash flows are presented in the statement of cash flows on a gross basis, except for the GST components of investing and financing activities, which are disclosed as operating cash flows.

j) Goods held for distribution

Donated goods and goods purchased for nominal consideration held for distribution are initially recognised at their current replacement cost at date of acquisition. Inventories of goods purchased and held for distribution are initially recognised at cost. The cost of bringing each product to its present location and condition is determined on a first-in, first out basis.

k) Economic dependence

The entity is dependent upon the ongoing receipt of Government grants and community fundraising to ensure the ongoing continuance of its programs. At the date of this report, management has no reason to believe that this financial support will not continue in the short term.

STATURE FINANCIAL GROUP

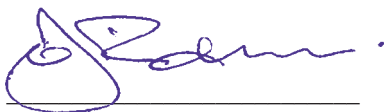
T (02) 4577 6688
E windsor@staturefinancialgroup.com.au
W staturefinancialgroup.com.au
P PO Box 529, Windsor, NSW, 2756

Springwood Neighbourhood Centre Co-operative Ltd STATEMENT BY MEMBERS OF THE BOARD DIRECTORS FOR THE YEAR ENDED 30 JUNE 2020

In the opinion of the Committee the Statement of Financial Position, Statement of Financial Performance and Notes to the financial Statements:

1. Present fairly the financial position of Springwood Neighbourhood Centre Co-operative Limited as at 30 June 2020 and its performance for the year ended on that date in accordance with Australian Accounting Standards, mandatory professional reporting requirements and other authoritative pronouncements of the Australian Accounting Standards Board.
2. An amount equal to the payments received for the year less any advance grants has been spent on the projects, and
3. Establishment of all accruals is justified, and
4. A full and complete set of financial records has been maintained, and
5. At the date of this statement, there are reasonable grounds to believe that the association will be able to pay its debts as and when they fall due.

This statement is made in accordance with a resolution of the Board Directors and is signed for and on behalf of the Board Directors by:



Director, Joanne Ridley



Director, Diane Burn

Dated this 24th day of September, 2020

Liability limited by a scheme approved under Professional Standards Legislation

"Stature" is comprised of: Stature ARW Accounting Pty Ltd, ABN 61 820 298 752. Stature Mortgage Solutions Pty Ltd, ABN 79 138 982 804, Stature Leasing Services Pty Ltd t/as Iconex Leasing, ACN 147 948 089, Stature Wealth Management Pty Ltd trading as Stature Financial Group, ABN 57 130 423 700 which is an authorised representative and credit representative of Hillross Financial Services Pty Ltd, ABN 77 003 323 055, AFSL and Australian Credit Licensee. Hillross is not involved with, and not responsible for, the provision of accounting, mortgage or leasing services. This letter contains general information only. It does not take into account your objectives, financial situation or needs. Please consider the appropriateness of the information in light of your personal circumstances. Before you make any investment decision, you should read the current Product Disclosure Statement. If you decide to purchase or vary a financial product, your Stature Wealth Management adviser, Hillross and other companies within the AMP Group will receive fees and other benefits, which will be a percentage of the premium you pay and/or the advice fee you agree with us. Further details are available from us or Hillross, who can be contacted on 1800 445 767 or email at info@hillross.com.au

Sydney

Level 4, 92 Pitt St
Sydney NSW 2000

Melbourne

Suite 1030/L10,
1 Queens Rd
Melbourne VIC 3004

Bella Vista

A28, 24-32 Lexington Drive
Bella Vista, NSW, 2153
(Building A, Level 2)

Brisbane

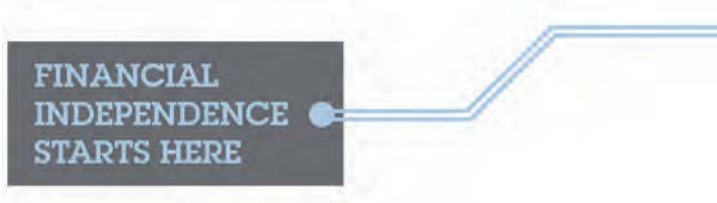
Level 3, 349 Coronation Dr
Milton QLD 4064

Windsor

Shop 9, 100 George St
Windsor NSW 2756

Adelaide

82 Melbourne Street
North Adelaide SA 5006



FINANCIAL
INDEPENDENCE
STARTS HERE

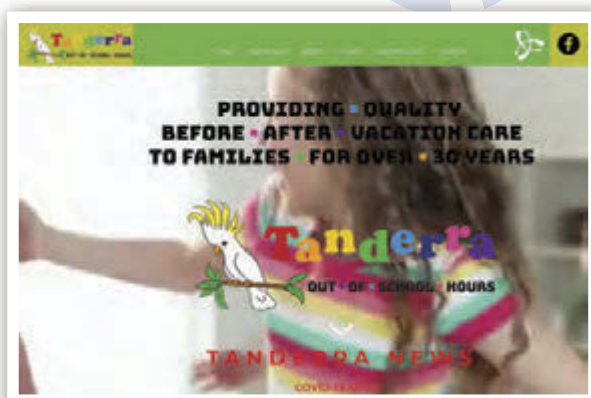
Keep informed and up-to-date

with all that is happening in your neighbourhood and community through the Springwood Neighbourhood Centre at the Hub

If the Centre is closed you can still be informed via the SNCC website www.sncc.org.au or become a Facebook friend.

You are welcome to leave a message on 4751 3033, send an email to reception@sncc.org.au, a private message through Facebook or through our website contact page.

We look forward to hearing from you.



Be part of **something bigger...**

How?

Become a member of SNCC

Become a member of SNCC and participate more closely with SNCC's service delivery to our community, includes attending a catered Annual General Meeting.

- \$22 individual membership
- \$30 family membership
- \$100 business membership

Become a regular Donor

Become a regular Donor to our Community Food Relief – with community help, SNCC supports close to 1000 adults and children each year with food parcels!

You are welcome to drop by with any contributions or donate electronically (if selecting this method please email our Finance Officer, Lyn at finance@sncc.org.au)

**Springwood Neighbourhood Centre
Bendigo Bank
BSB: 633-000
Account: 122 031 008**

Become a volunteer

There are many opportunities available to volunteer. Just let us know how much time you have and which service area you would like to work in.

Contact us by telephoning 02 4751 3033 or email reception@sncc.org.au

Become a Supporter

Become a supporter for our fundraising programs – whether a village sausage sizzle or a raffle. SNCC aims to do more fundraising in 2020 to expand our transport and other support services for our frail aged and other community members.

Take action at the local level and be the change you want for your community



Springwood Neighbourhood
Centre Co-operative Ltd

